

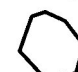



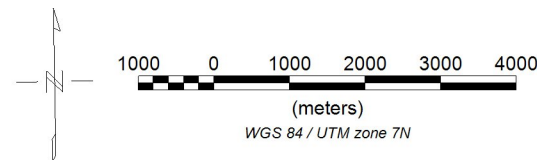


## Legend

-  Inferred Structural Lineation
-  Interpreted Fault
-  Interpreted Intrusive
-  Interpreted Highly Altered Intrusive
- Soil Samples**
  -  Cu > 100 ppm
  -  Au > 30 ppb



Nevada Zinc Corporation

**Magnetic Map  
VIP Block**

Horizontal Gradient

May 30, 2016

**Precision**  
GeoSurveys